

Manual

3Dconnexion® Keyboard Pro with Numpad



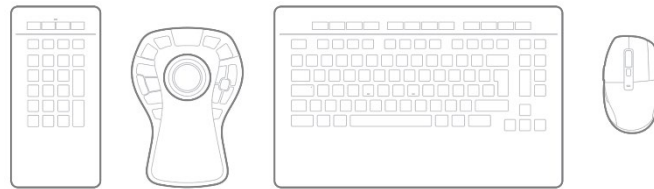
Driver Version: 3DxWare 10.8.15 and higher

Table of Content

QuickStart Guide	3
Desktop Setup	3
Installation	3
Feature Guide.....	4
3Dconnexion Keyboard Pro.....	4
3Dconnexion Numpad Pro	5
3Dconnexion Settings.....	7
Advanced Settings	8
Buttons	9
Assigning Quick Macros to buttons	9
Assigning Commands using the flyout window	10
Creating Macros and Radial Menus	10
Paired Devices	13
3Dconnexion Home	14
Technical Specifications.....	15
Safety, Compliance and Warranty Information	16

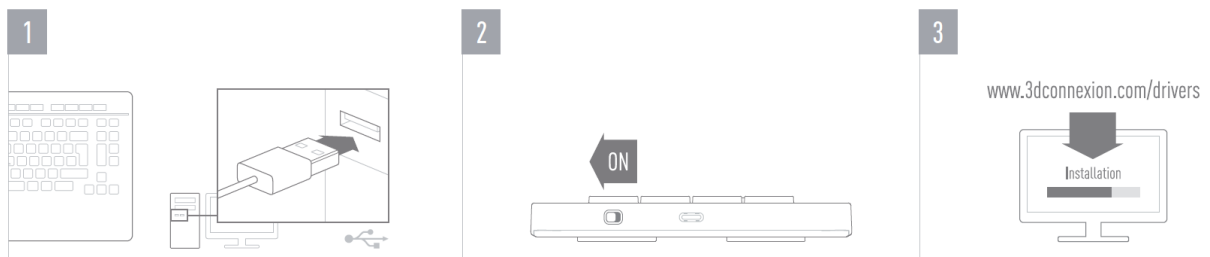
QuickStart Guide

Desktop Setup



Place the Numpad Pro, so that it fits your preferences and tasks. For a natural and ergonomic posture, we recommend placing it at the opposite side of your CadMouse.

Installation



1. Connect

Make sure the Keyboard Pro is connected to an USB port of your PC.

2. Turn on the Numpad Pro

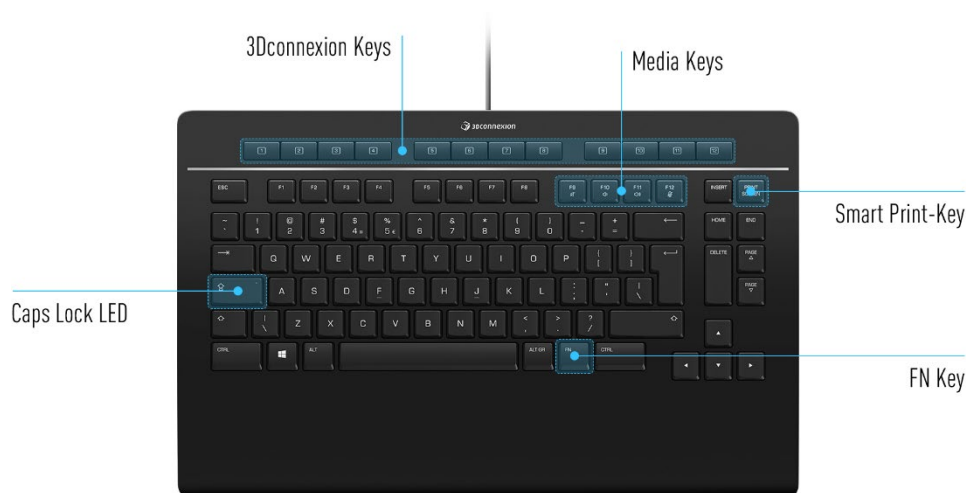
Turn on the device with the power switch located on the right rear side of the Numpad.

3. Download and install the latest software package

Make sure you have the latest 3Dconnexion software installed. The latest version can be downloaded at 3dconnexion.com/drivers.

Feature Guide

3Dconnexion Keyboard Pro



3Dconnexion Keys

The keyboard features 12 additional programmable function keys, located above the standard keys. It instantly recognizes the applications you are using, as well as their environments and automatically assigns the most used commands to the keys.

Note: The 3Dconnexion driver (3DxWare) is needed to make the 3Dconnexion Keys work.



On-Screen Display

After installing the driver, the On-Screen Display (OSD) will appear on your desktop, providing a convenient visual reminder of the commands assigned to the 3Dconnexion Keys. You can easily drag and drop the OSD to a different position, where it is more convenient (e.g., on the taskbar near the systray).



FN-Key



Press the FN-Key to control the Media Keys.

Press and hold the FN-Key to assign a set of convenient commands to the 3Dconnexion Keys. You will be able to start your preferred applications and have access to media controls. Press and hold the FN-Key and start the 3Dconnexion Settings to personalize them according to your preference.



Media Keys



Whether it's a virtual meeting, music, or video, you can use the F9-F12 keys in combination with the FN-Key to control the microphone and speakers.

Smart Print-Key

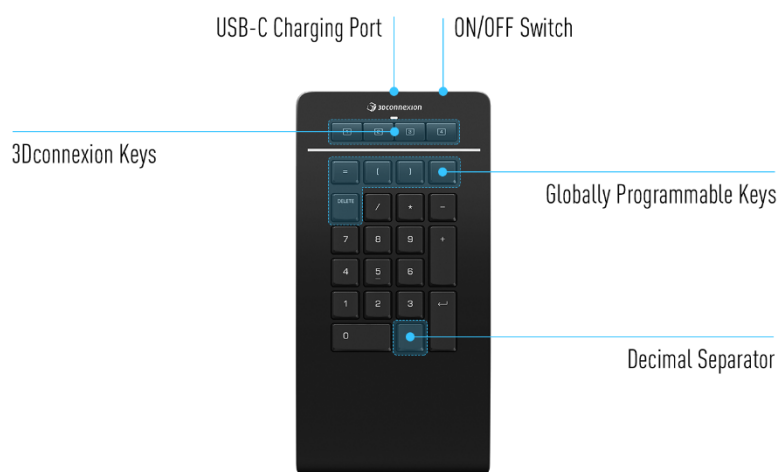


The 3Dconnexion Smart Print-Key helps you take screenshots in a flash. Pressing the Smart Print-Key starts the Microsoft Windows screen snipping function. Select whether you want to capture a rectangle or the entire screen and create your screenshot. The screenshot is automatically saved to the clipboard and is ready to be pasted.

Integrated 3Dconnexion Receiver

Your Keyboard Pro comes with a built-in 3Dconnexion Receiver that lets you connect the 3Dconnexion Numpad and up to five additional 3Dconnexion devices of the SpaceMouse and CadMouse product lines to your PC. Open the **3Dconnexion Settings** panel, click on the **Paired Devices** button and follow the instructions.

3Dconnexion Numpad Pro



3Dconnexion Keys

The Numpad Pro features four additional programmable function keys, located above the standard keys. It instantly recognizes the applications you are using, as well as their environments and automatically assigns the most used commands to the keys. Note: The 3Dconnexion driver (3DxWare) is needed to make the 3Dconnexion Keys work.



On-Screen Display

After installing the driver, the OSD for the Numpad Pro is hidden by default. In order to enable the OSD open the **3Dconnexion Settings**, select the Numpad Pro, click on **Buttons**, and activate the checkbox **Always show On-Screen Display**.



Globally Programmable Keys



In addition to the 3Dconnexion Keys, your Numpad Pro provides five Globally Programmable Keys, whose function remains the same system-wide (no matter in which application you are currently working). They can be easily personalized in the **3Dconnexion Settings**.

Decimal Separator



You can adjust the Decimal Separator of your Numpad Pro to suit your preferences in the **3Dconnexion Settings**.

Status LED

The Numpad Pro features a status LED that shows the battery status and the connection status as well.

▪ Battery status:

Immediately after turning on the device or after wake-up from sleep, the LED will show the current charge level:

- **Green** The Numpad Pro is sufficiently charged.
- **Red** The Numpad Pro has less than 10% charge and requires charging.

▪ Pairing and connection status:

After the battery status is displayed, the device will show the current connection and pairing mode.

- **White** (steady) Successfully connected in 3Dconnexion wireless mode.
- **White** (pulsing) Ready for 3Dconnexion wireless connection.
- **Blue** (steady) Successfully connected in Bluetooth mode.
- **Blue** (pulsing) Ready for Bluetooth connection.

After the device has been successfully connected, the LED turns off.

Charge your Numpad Pro

Connect your Numpad Pro to a charging port on your computer by using the included USB cable. As long as the Numpad Pro is charging, the status LED will flash green and it will turn solid green when it is fully charged.

Connect your Numpad Pro



The Numpad Pro can be connected via your Keyboard Pro, Bluetooth® (Swift Pair included) or USB cable. The wireless connection between your Keyboard Pro and your Numpad is always encrypted in order to ensure the security of your data.

Note: Since your Numpad is factory paired with the Keyboard, you must first remove this connection, before you can pair it via Bluetooth. This can be done by opening 3Dconnexion Settings, selecting the Keyboard Pro and going to **Paired Devices**.

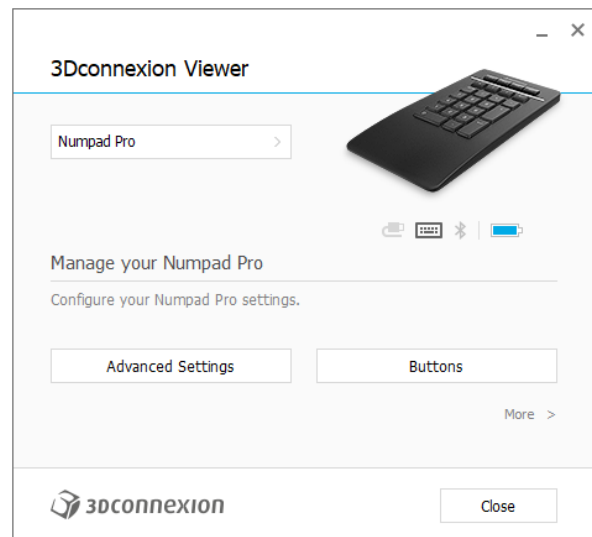
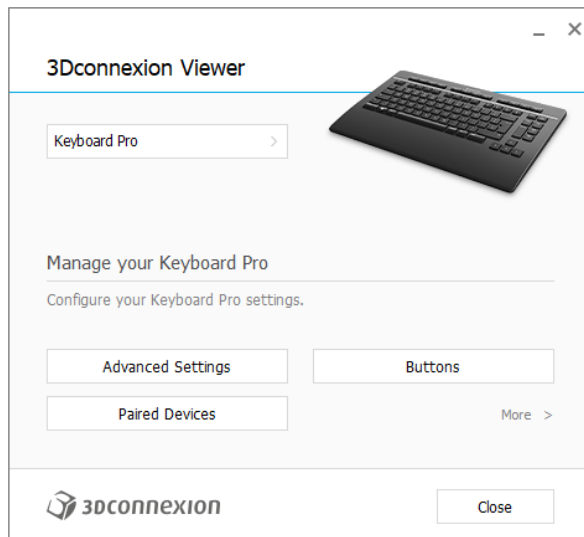
Afterwards turn on the device and the status LED on your Numpad Pro will start flashing blue. Next, make sure Bluetooth is active on your PC and in discover mode. Now choose your device from the list and pair it to your PC.

3Dconnexion Settings

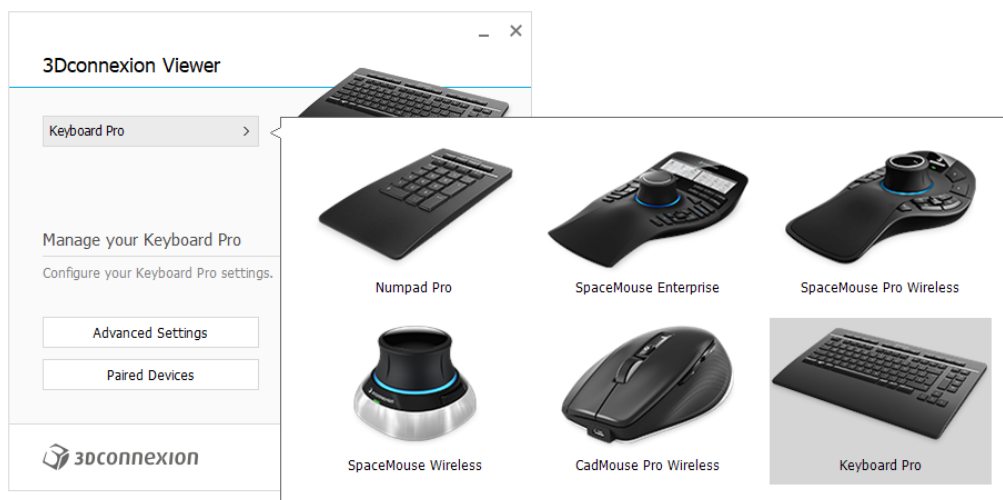


You can access the 3Dconnexion Settings panel either via 3Dconnexion Home (on your desktop), the icon in your notification area (systray), or the Windows start menu.

The name of the active application is displayed at the top of the panel. Any setting change is relevant to this application only.

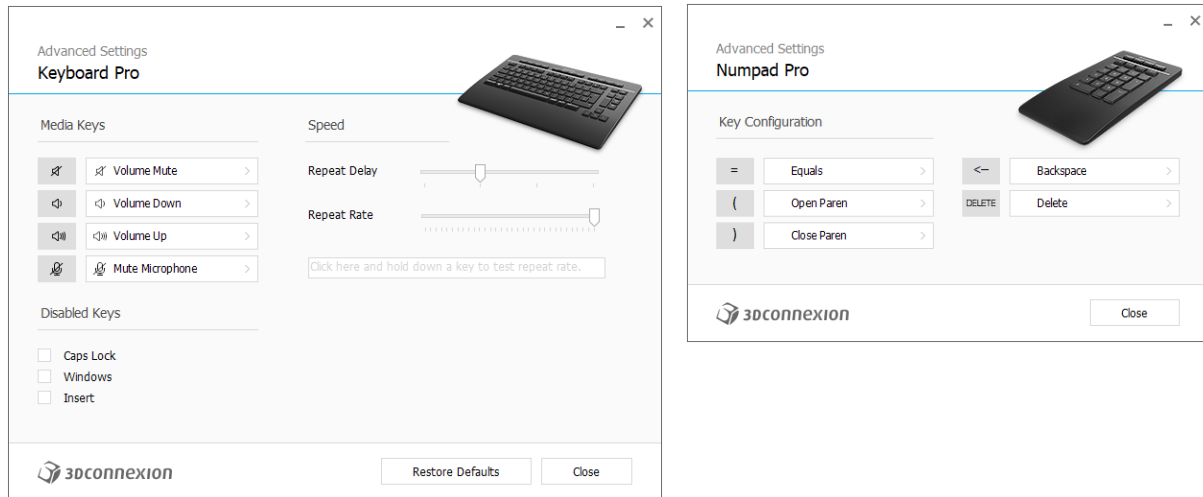


If multiple 3Dconnexion devices are connected, you can select the desired product to configure by clicking on the flyout button at the top left of the panel.



Advanced Settings

Settings that can be configured in the **Advanced Settings** panel are not application-specific but are the same for all applications system-wide.



Keyboard Pro

Media Keys

By clicking on the > arrow on the right-hand side of the key field you open a flyout window with the help of which you can assign commands, macros or radial menus to the Media Keys (Assigning Commands using the flyout window).

Speed

By moving the two sliders you can change the repeat delay (the time between when you press and hold a key and when the computer detects the keystroke as multiple keystrokes) and the repeat rate (the speed at which the computer outputs the multiple keystrokes). In the field below you can test your changes.

Disabled Keys

Caps Lock: by checking this box, the Caps Lock Key is deactivated.

Windows: by checking this box, the Windows Key is deactivated.

Insert: by checking this box, the Insert Key is deactivated.

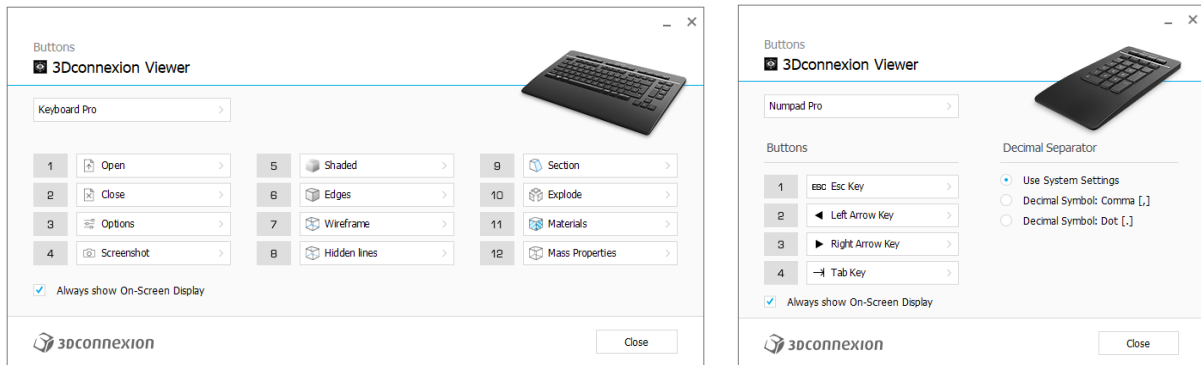
Numpad Pro

Key Configuration

By clicking on the > arrow on the right-hand side of the key field you open a flyout window with the help of which you can assign commands, macros or radial menus to the keys (Assigning Commands using the flyout window).

Buttons

The **Buttons** panel within 3Dconnexion Settings allows you to assign commands, macros or radial menus to the programmable 3Dconnexion Keys, which are placed on top of your Keyboard/Numpad. The name of the active application is displayed at the top of the panel. Any setting change is relevant to this application only. While you are working in an application, the On-Screen Display always shows you the current assignment of the keys for this app. Uncheck **Always show On-Screen Display** to hide the OSD.



A note about Environment sensitivity: Some applications feature environment sensitive key mapping. In those applications you can have different key assignments depending on the current active environment.

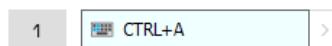
Numpad Pro

Decimal Separator

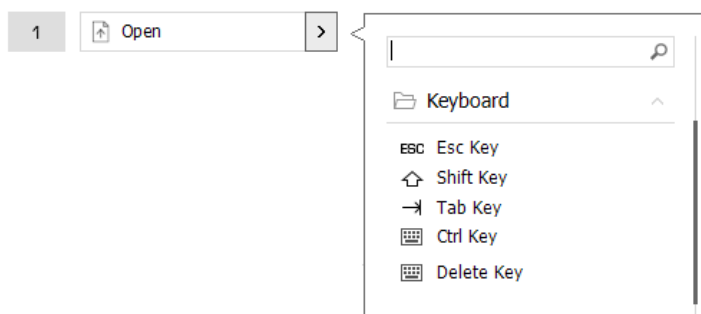
You can decide whether the decimal separator is automatically selected based on the system settings or whether you manually choose the **Comma** or **Dot** setting for a certain application.

Assigning Quick Macros to buttons

Click on the text in the key field and press the required key or key combination to quickly assign a keystroke or macro to a 3Dconnexion Key.

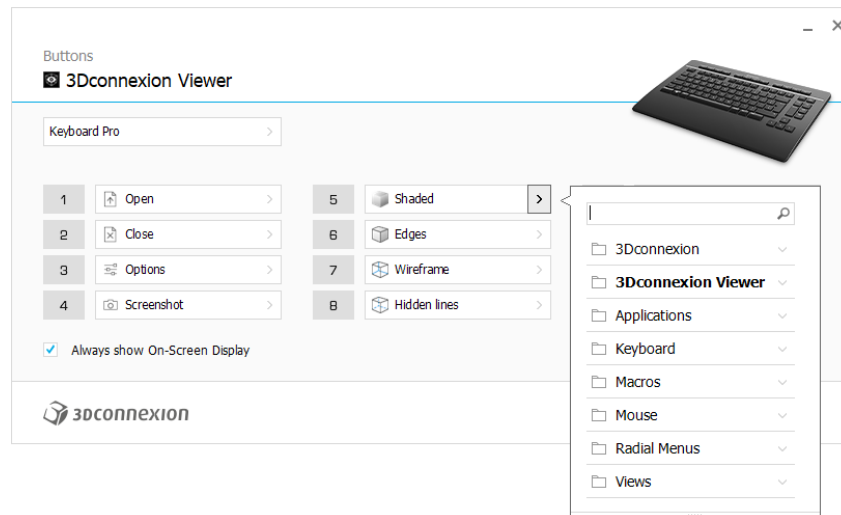


When a macro is created, it always sends a **press and release** command. If you want to assign a **press and hold** command instead (for example Ctrl or Shift), you should use the **Keyboard** command category in the flyout window.



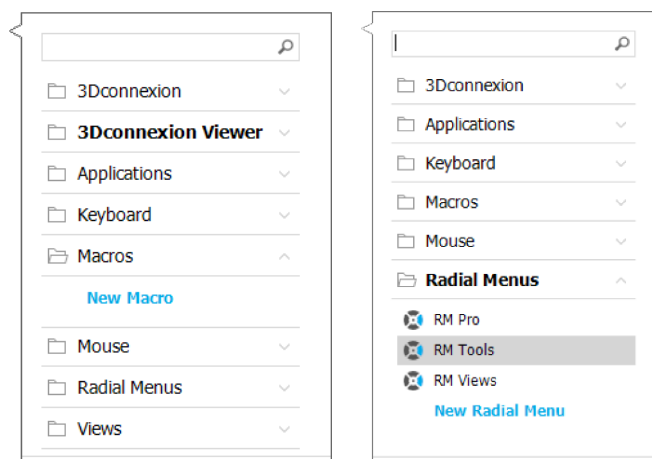
Assigning Commands using the flyout window

Clicking on the > arrow on the right-hand side of the key field opens a flyout window for that Keyboard/Numpad key:
The category of the command that it is currently assigned to is highlighted in bold. The flyout window allows you to browse or search for commands in different categories such as 3Dconnexion or application commands. When you select a command by clicking on it, it is automatically assigned to the Keyboard/Numpad key.



Creating Macros and Radial Menus

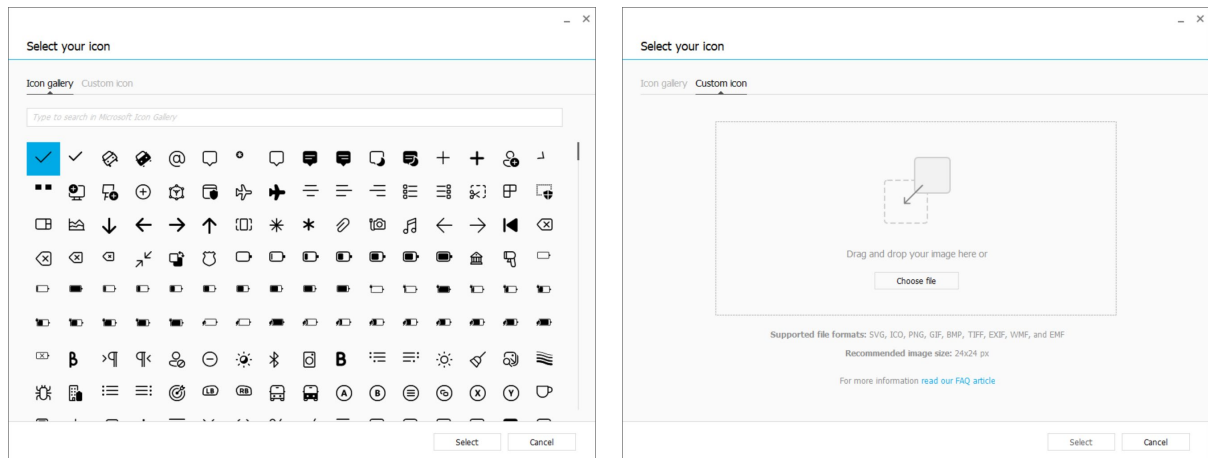
To create a new macro or radial menu, first click on the > arrow on the right of the key field, then expand the **Macro/Radial Menu** category and click on **New Macro/New Radial Menu**.



Assigning icons to Macros and Radial Menus

In a first step you are asked to give your macro or radial menu a name and assign an icon to it.

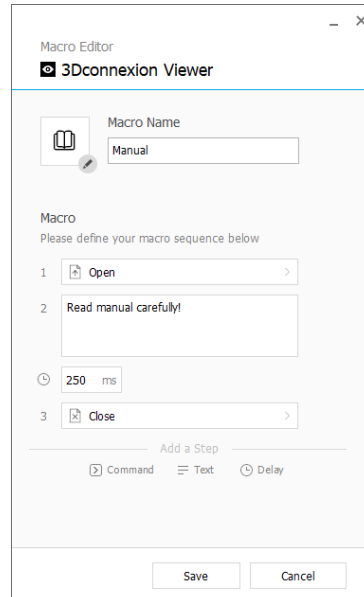
You can choose to use one of the icons already provided in the icon gallery tab or upload your own icon in the custom icon tab.



Note: The image must not be larger than 500x500px and must be in one of the following file formats: SVG, ICO, PNG, GIF, BMP, TIFF, EXIF, WMF, and EMF. For an optimal rendering result, we recommend an image in 24x24px with a transparent background.

Creating Macros

As a second step, when creating a new macro, you have the option to edit your macro sequence by adding steps to it.

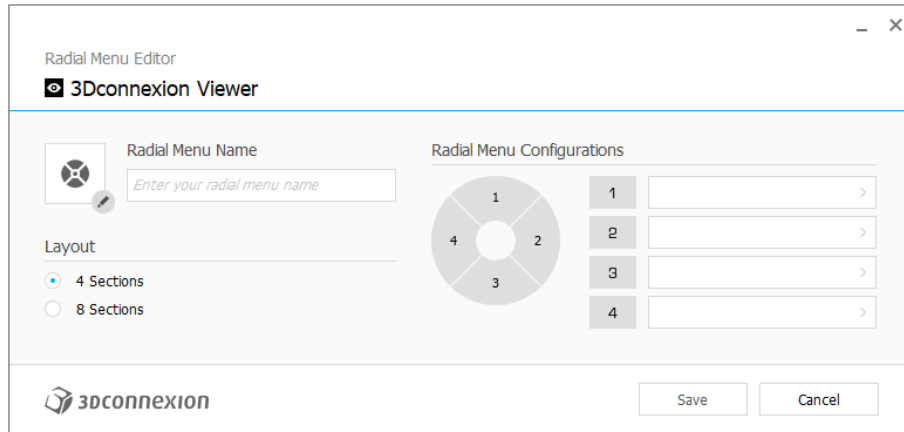


Within this sequence you can assign keyboard shortcuts to a "Command"-step as well as use the flyout window to assign application commands to it. "Text"-steps allow you to add text blocks to your macro. "Delay" steps allow you to compensate for longer loading times of your application.

The sequence of your macro is editable by dragging the single steps into the right order or deleting steps that are not needed. When you are done editing your macro, click save to automatically assign the new macro to the button from where you opened the panel.

Creating Radial Menus

When creating a new radial menu as a second step you have the option to choose between a four and an eight-section layout. Assign commands or macros to the different sections and save your radial menu. Your new radial menu will be automatically assigned to the button from where you opened the panel.

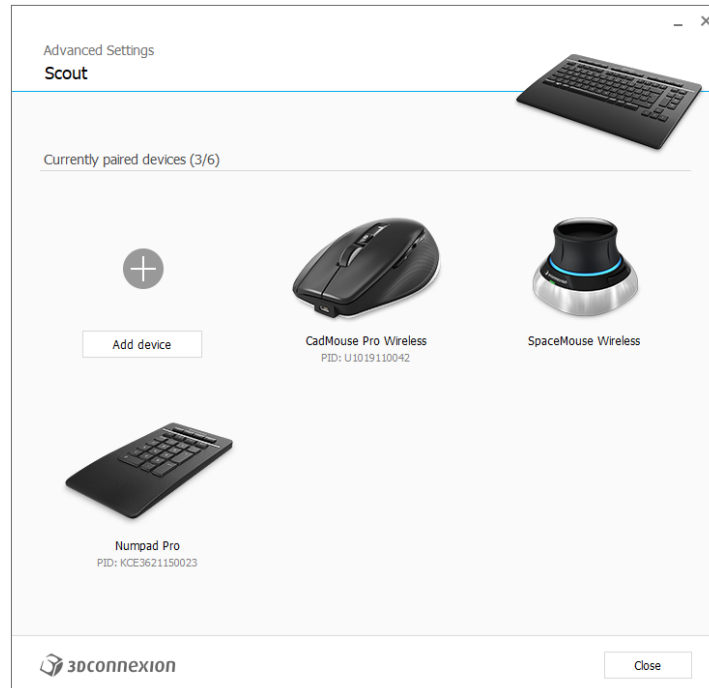


The image shows a software dialog box titled "Radial Menu Editor" with a "3Dconnexion Viewer" icon. It contains a "Radial Menu Name" field with a placeholder "Enter your radial menu name". Below this is a "Layout" section with two radio buttons: "4 Sections" (selected) and "8 Sections". To the right is a "Radial Menu Configurations" section featuring a circular diagram divided into four numbered segments (1, 2, 3, 4) and a corresponding list of four numbered input fields, each with a right-pointing arrow. At the bottom are "Save" and "Cancel" buttons, and the 3Dconnexion logo is in the bottom left corner.

Paired Devices

As your Keyboard Pro has an integrated 3Dconnexion Receiver, you can connect the 3Dconnexion Numpad and up to five additional 3Dconnexion devices of the SpaceMouse and CadMouse product line via the **Paired Devices** panel.

First click the **Add Device** or **+** button, then choose your device and follow the instructions of the pairing tool. The communication between your 3Dconnexion Numpad Pro and your Keyboard Pro is fully encrypted.



3Dconnexion Home



Once you have successfully installed the latest 3Dconnexion driver, 3Dconnexion Home gives you access to various 3Dconnexion apps:



Trainer:

Learn how to quickly use the 3Dconnexion SpaceMouse.



Manual:

Here you can find the manuals for all 3Dconnexion products.



Settings:

Open the settings panel to customize your 3Dconnexion devices.



Viewer:

Use the 3Dconnexion Viewer to review 3D models.

Supported formats (.stp, .step, .igs, .iges, .obj, .stl, .ply, .jt, .glTF).



Demo:

Test and practice your skills by assembling the landing gear of an aircraft.



Registration:

[Register](#) your product after the installation to benefit from 3Dconnexion services.



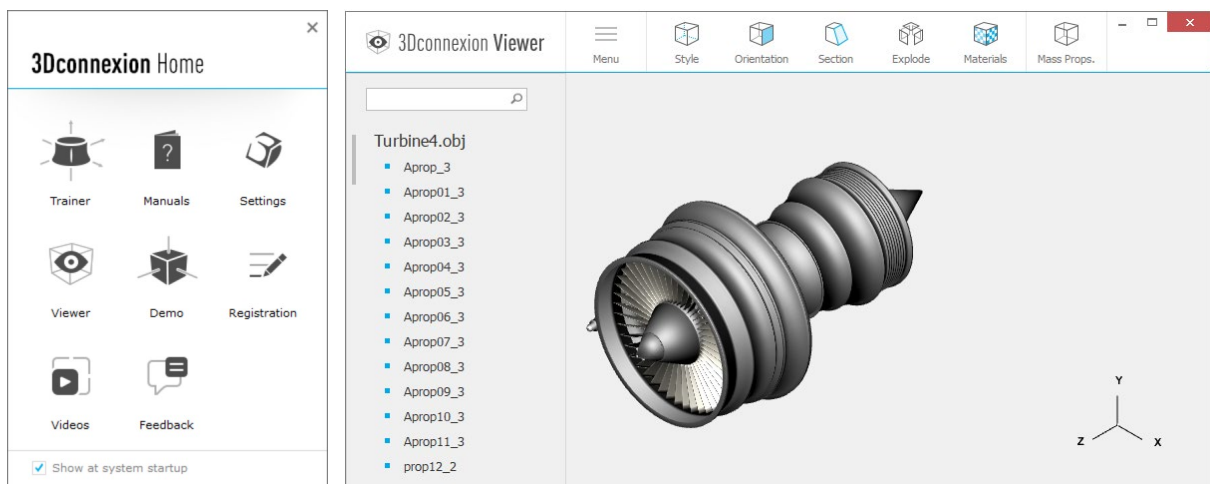
Videos:

Find instructive [videos](#) for your 3Dconnexion devices.



Feedback:

Provide feedback to the 3Dconnexion product team.



Technical Specifications

Dimensions & Weight

- **3Dconnexion Keyboard Pro**

Width: 366 mm / 14.4"

Depth: 229 mm / 9.0"

Height: 16 mm / 0.6"

Weight: 880 g / 1.94 lb / 31 oz

- **3Dconnexion Numpad Pro**

Width: 114 mm / 4.5"

Depth: 229 mm / 9.0"

Height: 16 mm / 0.6"

Weight: 250 g / 0.55 lb / 8.8 oz

Battery - 3Dconnexion Numpad Pro

Rechargeable lithium polymer battery with a capacity of 350 mAh

Supported Operating Systems

Microsoft Windows

[More information](#)

Package Contents

- 3Dconnexion Keyboard Pro
- 3Dconnexion Numpad Pro
- 3Dconnexion Cable USB-A / USB-C (1.5m)

Part Numbers

Packaging unit numbers (on packaging):

3DX-700092

Part number (on device):

3DX-600082, 3DX-600102

Safety, Compliance and Warranty Information

Manufacturer

3Dconnexion GmbH
Clarita-Bernhard-Straße 18
81249 Munich
Germany

Certifications and Registrations

CE, UKCA, EAC, FCC, RCM, WEEE, RoHS-EU, REACH-SVHC, RoHS-CN

[More information](#)

Warranty

3-years limited hardware warranty

Radio Frequency Information

Frequency band(s): 2404 - 2477 MHz

Maximum radio-frequency power: 0DBM

Battery Warning

[More information](#)

Support

3dconnexion.com/support